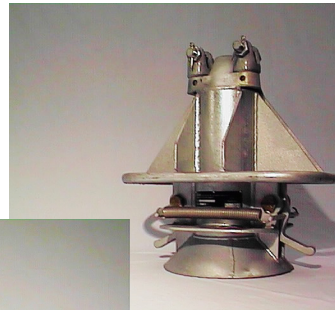
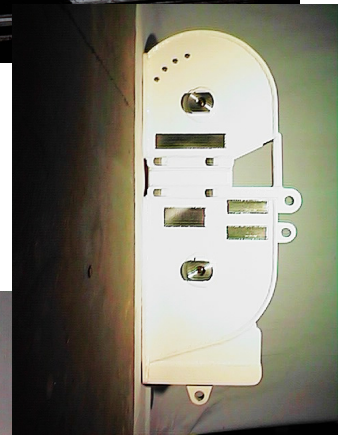


CARGO AND DECK HARDWARE • Per NAVSEA Drawings

- Trolleys, Saddle, Lightweight, Spanline, etc.
- Surf, Traveling
- Hooks, Pelican, ½” through 1-3/8” Stream
- Wire and Manila Rope Assemblies
- Chairs, Transfer
- Cleats, 2 and 3 Horn, and Padeyes
- Reversible Deck Bolts, Including AMPCO 45 and PYROMET Alloy
- Star Latch Assembly



Quality Assurance

Small DoD Prime Contractor
Of the Year – DCMA Pittsburgh
Award for Excellence – Small
Business Administration
MIL-Q-9858A and MIL-I-45208A,
LEVEL 1/SUBSAFE, NUCLEAR X-4
ISO 9000/2000 in process

MASTERCARD ACCEPTED



Headquarters and Plant
160 Cannery Road ~ P.O. Box 24 ~
Somerset, PA. 15501
PHONE: 814-445-9671 FAX: 814-443-1453
EMAIL: SALES@GLOBALSFC.COM

Underway Replenishment Systems
Navy Standard Valves
Fluid Control Systems

Johnstown Operations Office
647 Main Street ~ Suite 400 ~
Johnstown, PA. 15901
PHONE: 814-535-3111
WEB PAGE: WWW.GLOBALSFC.COM

Global/SFC Valve manufactures, assembles, tests and inventories U.S. Navy Underway Replenishment (UNREP) and Refueling at Sea (FAS) equipment, as well as Navy Standard Valves, Components and Sub-Assemblies

CAGE 1GZ83

CAGE 32373

CAGE 7H596

CCR 004353561

CCR 153747266